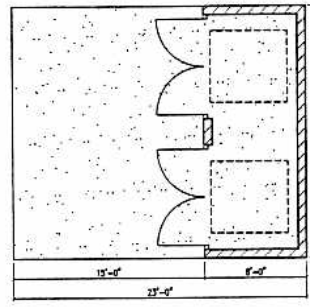
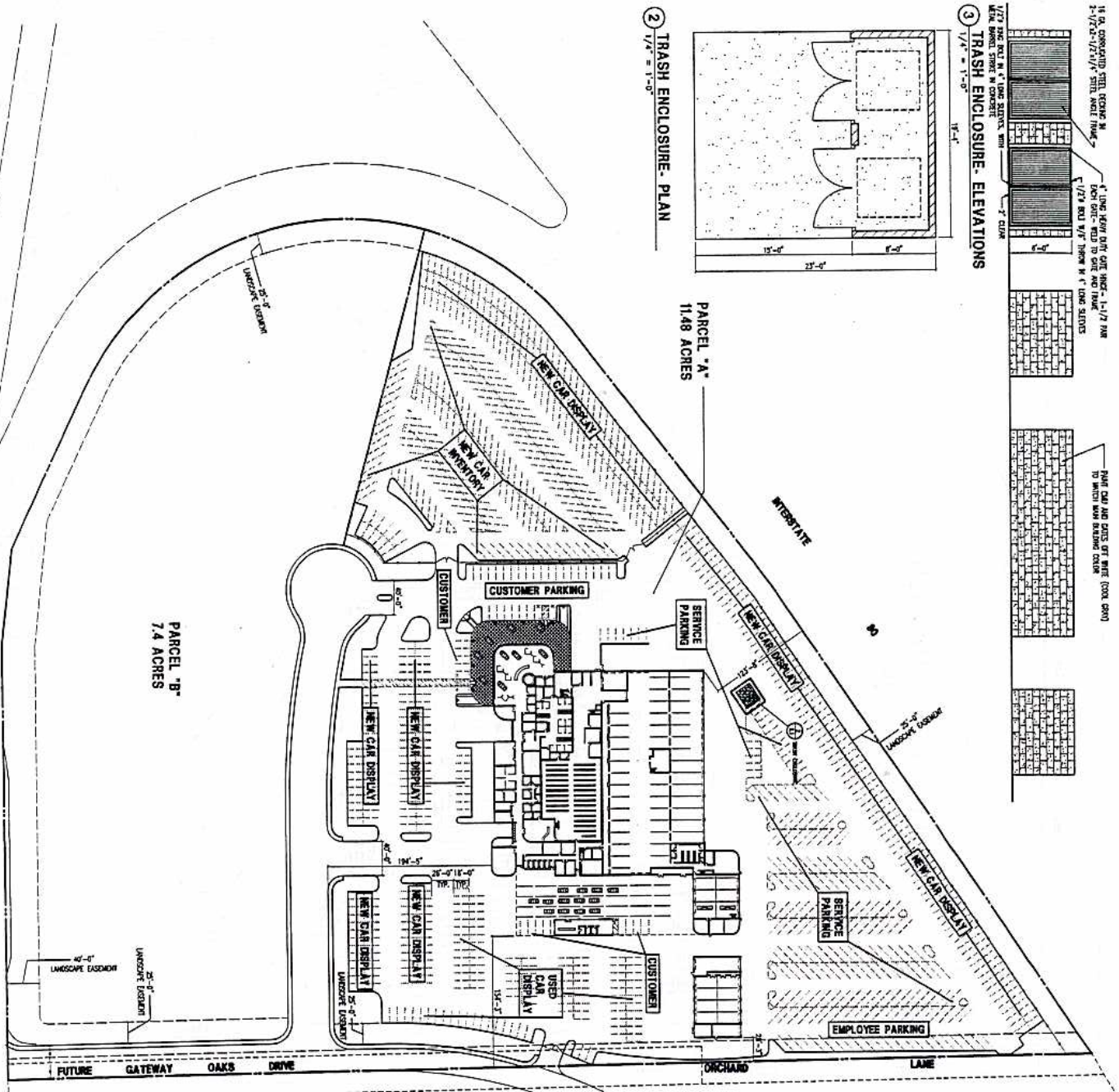


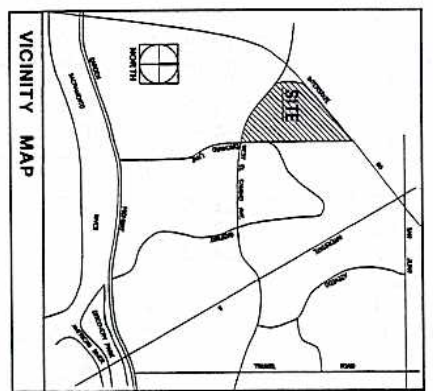
3 TRASH ENCLOSURE - ELEVATIONS
1/4" = 1'-0"



2 TRASH ENCLOSURE - PLAN
1/4" = 1'-0"



1 SITE PLAN
1" = 50'-0"



PROJECT DATA

A. MAIN BUILDING-	
FIRST FLOOR	67,292 S.F.
SECOND FLOOR	15,933 S.F.
MAIN BUILDING TOTAL	83,225 S.F.
B. DETAIL BUILDING-	
GRAND TOTAL	88,545 S.F.
TOTAL PARKING SPACES	933

NEW CAR DISPLAY	433 SPACES
USED CAR DISPLAY	99 SPACES
CUSTOMER PARKING	4 SPACES
EMPLOYEE PARKING	41 SPACES
SERVICE PARKING	146 SPACES
NEW CAR WASH/DETAIL	774 SPACES
TOTAL	933 SPACES



**DOWNTOWN FORD
NORTHEAST CORNER OF
WEST EL CAMINO AND INTERSTATE 80**

SACRAMENTO, CALIFORNIA



SITE PLAN

DATE	1/27/2009
SCALE	1" = 50'-0"
DRAWN BY	J. KELLEY
CHECKED BY	J. KELLEY
DATE	1/27/2009